

AWIPS II Status Update


Unidata Policy Committee Meeting

14 May 2013

NOAA Center for Weather and Climate Prediction

College Park, Maryland

AWIPS II Beta Release

package name	description	size	last modified
awips2-upc_13.2.1.tar 	UPC Release 13.2.1	3.7 GB	April 25, 2013
awips2.repo	yum repo file	100 B	March 11, 2013

The release tarball should be placed in `/awips2/repo`. When uncompressed the directory `/awips2/repo/awips2/` will be created.

AWIPS II Quick Install Guide

Last Updated April 25, 2013

1. Removing an existing AWIPS II Installation

for version 13.1.2 and older:

```
yum groupremove awips2-standalone -y
yum groupremove awips2-visualize -y
yum remove awips2-ldm -y
```

for version 13.2.1 and newer:

```
yum groupremove awips2-server -y
yum groupremove awips2-cave -y
```

Example

version received: awips2_OB13.2.1 (319 RPMs, 5.0 GB)

- installed on 10+ servers
- unable to decode nationwide NEXRAD3 feed
- LDM 6.8.1
- 5 step installation

version released: awips2-upc-13.2.1 (185 RPMs, 3.7 GB)

- 1 standalone server
- full NEXRAD3 decoding
- faster CONDUIT grib2 decoding
- LDM 6.11.2
- 1 step installation

Upcoming Releases

1. Initial operating capability of Data Delivery / OpenDAP, OB13.3.1 / **June 2013**
2. Upgrade to PostGres database and QPID, OB13.4.1 / **August 2013**
3. GEMPAK program read from AWIPS II database, OB13.5.1 / **September 2013**
4. Upgrade to RHEL 6.0, OB14.1.1 / **January 2014**
5. Upgrade to 64-bit Server, OB14.4.1 / **July 2014**

Beta Test Impressions

Installation

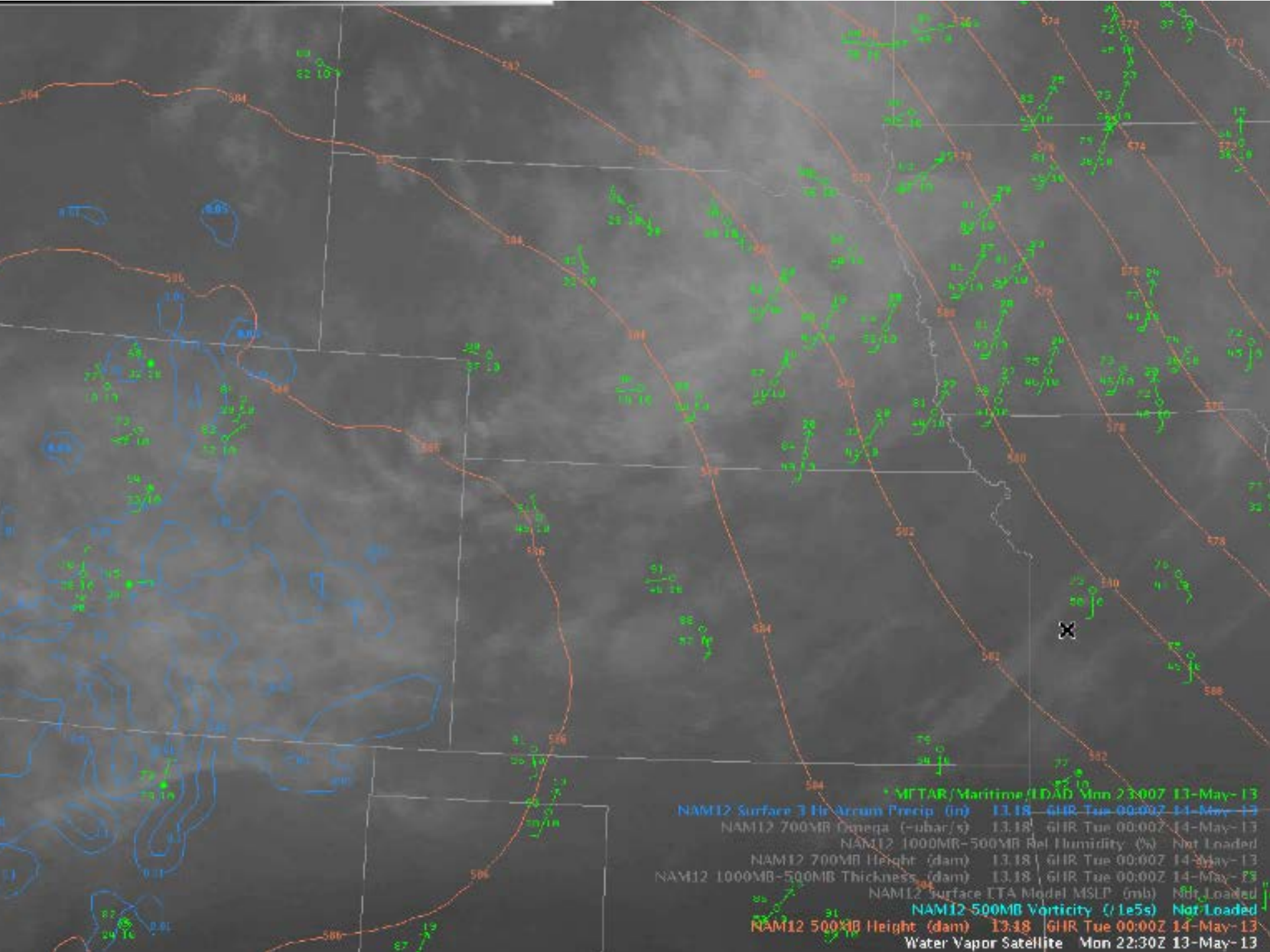
- *"Installation went fairly smoothly with only a couple of minor glitches"*
- *"So far things are going well, EDEX seems to get up and running without any hitches"*
- *"Initial impression from the last install was that it has progressed. **Your work has made things a lot more usable**"*
- *"Data seems to be coming in okay"*
- *"I'm happy to say that the 13.2.1 version is (mostly) doing fine"*

CAVE Visualization

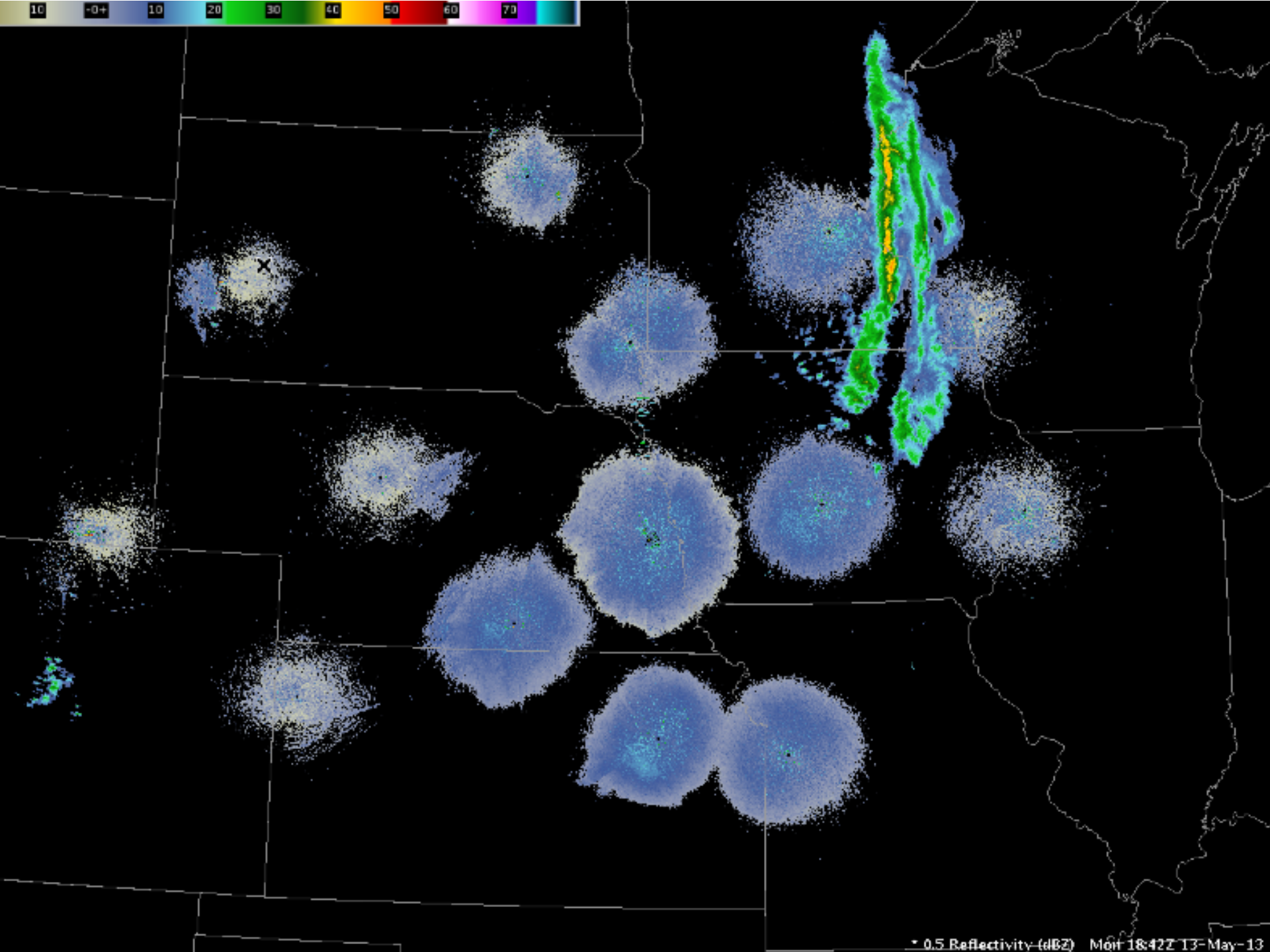
- *"CAVE is **incorrectly displaying strewn vector graphics** over partially visible map backgrounds"*
- *"While trying to do a station plot, **CAVE dies with errors**"*
- *"I am **still having difficulties getting CAVE installed** and up and running"*
- *"I have access to CAVE, and it is a lot smoother than it was in earlier releases"*
- *"For the first time, CAVE loaded to completion without any error messages"*

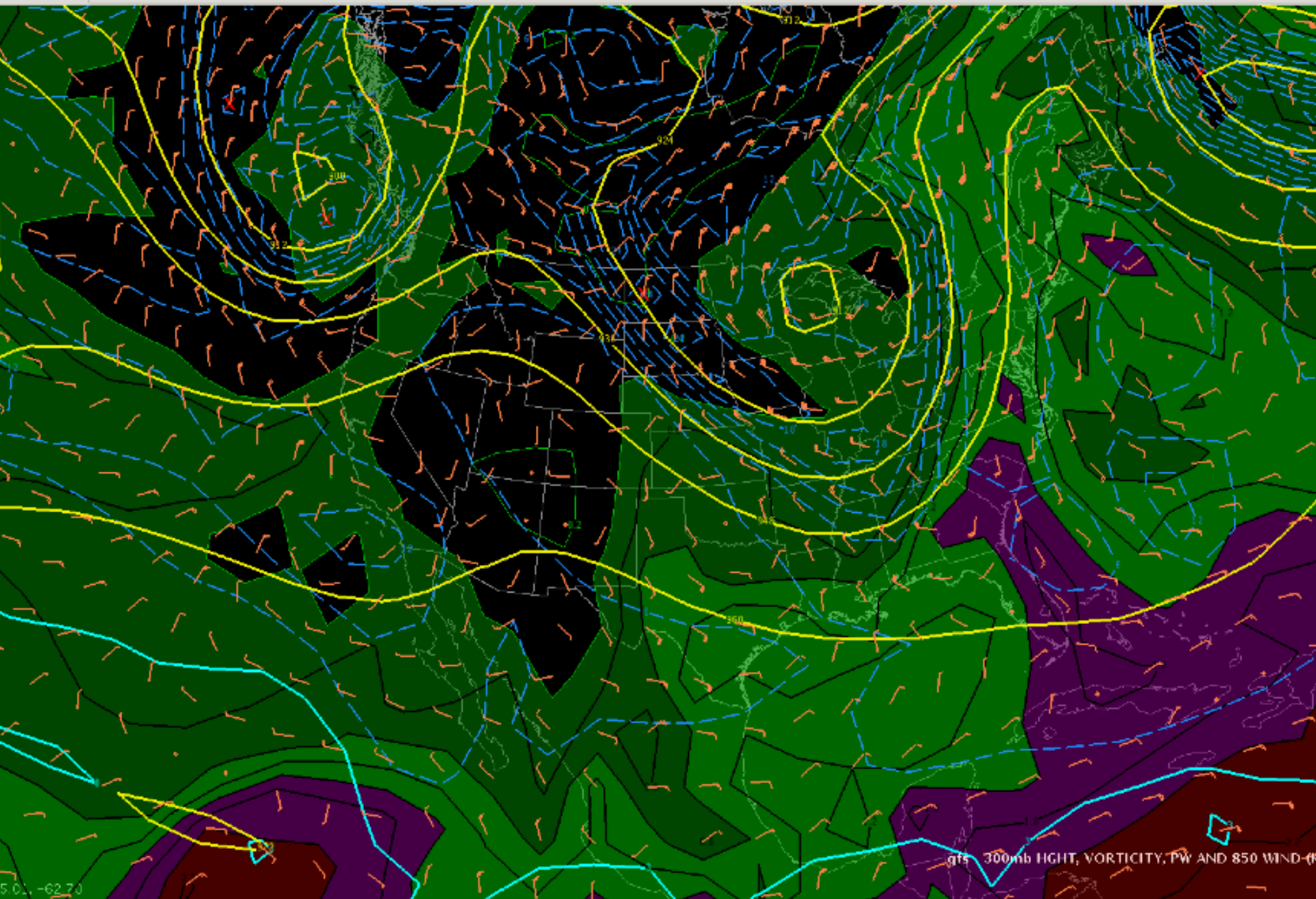
Concerns

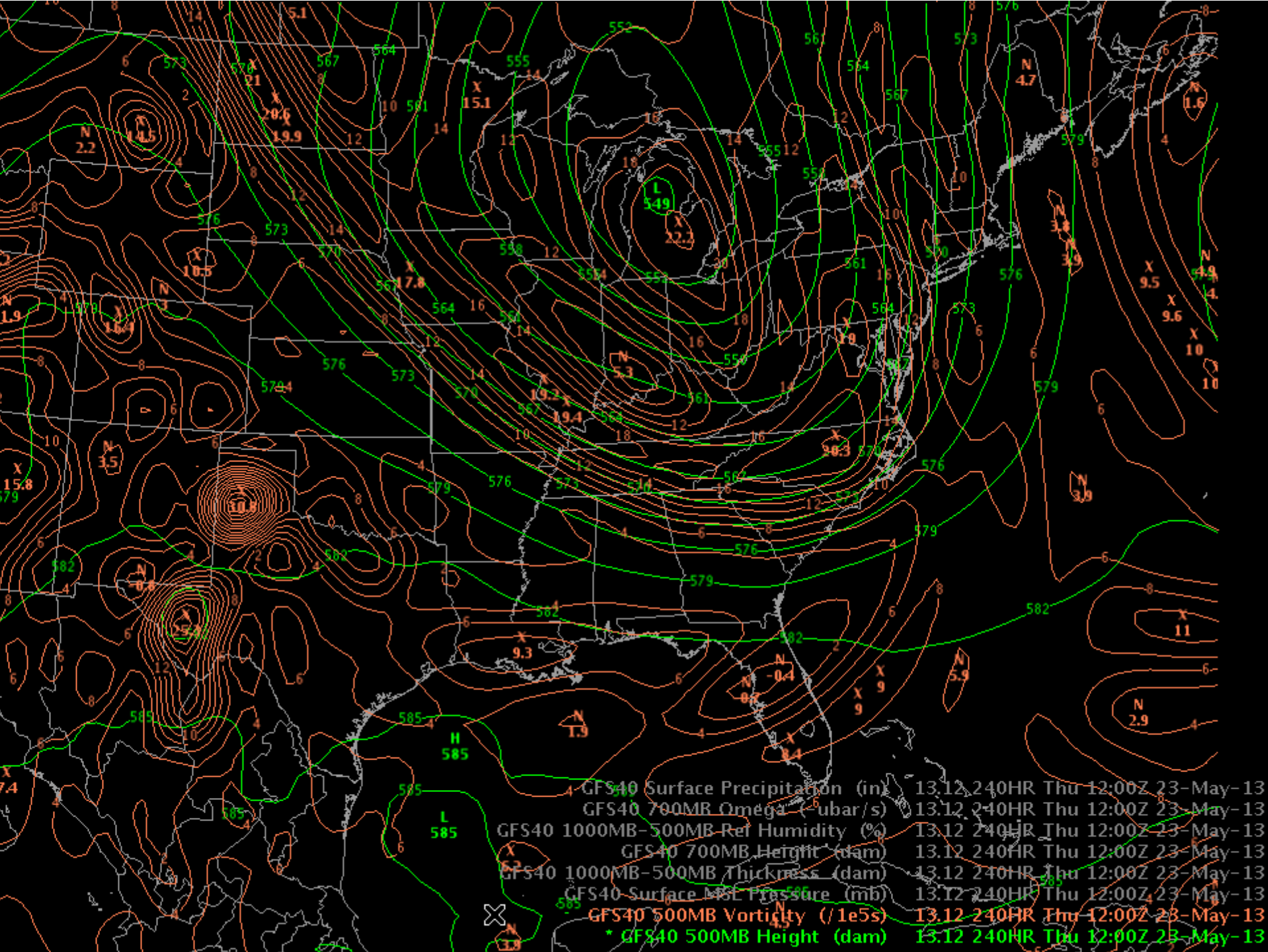
- *"How do you plan to deploy AWIPS II to a classroom environment?"*
- *"All of my systems are RHEL 64bit and **there is no way I am installing RHEL 32bit** on all of those systems"*
- *"The ingest logs are **frighteningly large**"*
- *"CAVE loads without errors, but takes a long time"*



* MFTAR/ Maritime / LDAD Mon 23:00Z 13-May-13
 NAM12 Surface 3 Hr Accum Precip (in) 13.18 GHR Tue 00:00Z 14-May-13
 NAM12 700MB Omega (-ubar/s) 13.18 GHR Tue 00:00Z 14-May-13
 NAM12 1000MB-500MB Rel Humidity (%) Not Loaded
 NAM12 700MB Height (dam) 13.18 GHR Tue 00:00Z 14-May-13
 NAM12 1000MB-500MB Thickness (dam) 13.18 GHR Tue 00:00Z 14-May-13
 NAM12 Surface ITA Model MSLP (mb) Not Loaded
 NAM12 500MB Vorticity (/1e5s) Not Loaded
 NAM12 500MB Height (dam) 13.18 GHR Tue 00:00Z 14-May-13
 Water Vapor Satellite Mon 22:30Z 13-May-13







- GFS40 Surface Precipitation (in) 13.12.240HR Thu 12:00Z 23-May-13
- GFS40 700MB Omega ($\mu\text{bar/s}$) 13.12.240HR Thu 12:00Z 23-May-13
- GFS40 1000MB-500MB Ref Humidity (%) 13.12.240HR Thu 12:00Z 23-May-13
- GFS40 700MB Height (dam) 13.12.240HR Thu 12:00Z 23-May-13
- GFS40 1000MB-500MB Thickness (dam) 13.12.240HR Thu 12:00Z 23-May-13
- GFS40 Surface MSL Pressure (mb) 13.12.240HR Thu 12:00Z 23-May-13
- GFS40 500MB Vorticity ($/1e5s$) 13.12.240HR Thu 12:00Z 23-May-13
- * GFS40 500MB Height (dam) 13.12.240HR Thu 12:00Z 23-May-13

AWIPS II Training Workshops

For 2013, the GEMPAK/AWIPS II training workshop schedule is 2 days for GEMPAK with 1 day for AWIPS II. The AWIPS II portion will focus on:

- installation and configuration
- ingesting IDD data with the LDM
- managing postgres and HDF5 data storage
- using the D2D and NCP perspectives to view data

The workshop schedule will change after this year. The UPC will want to offer a more in-depth AWIPS II course that spans multiple days covering topics such as system administration, CAVE use, and plugin development.